

欢迎使用 TAKSTAR 便携式数字扩音器。本产品是专为教学、导游和参观等而设计的，采用数字技术，提供更长久的电池使用时间和大的输出功率，是教学、导游的理想选择。在使用之前，请仔细阅读说明书，以便能正确的操作，发挥本扩音器的性能。

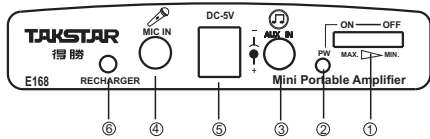
## 产品特性

- 集麦克风、功放、音箱、充电器、电池为一体的便携式数字扩音器。
- 采用class D数字模块，低功耗高效率，能输出高达6W的音频功率。
- 内置大容量耐久型锂离子电池，为该产品提供高电能的同时，减少废弃物的产生。
- 内置MCU充电管理系统，使电池处于安全可靠的模式下充放电，充电只需4-6小时，而连续使用可达20小时。
- 产品外观按人体工程学设计，造型新颖，外观时尚，使用舒适。

## 技术参数

频率响应：80Hz-12kHz  
 输出功率：6W (PMPO:12W)  
 扬声器阻抗：4Ω  
 工作电压：3.7V  
 电池规格：3.7V/2200mAh锂离子电池  
 充电器规格：DC 5V/600-750mA  
 充电时间：4-6小时  
 使用时间：20小时

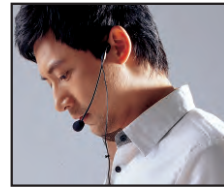
## 控制面板功能示意图



- ① 电源开关和音量调整旋钮：向左转动旋钮，听到“滴”一声，表示扩音器已通电，此时电源指示灯②亮，继续向左转动旋钮声音越大，反之，声音越小直至关机。
- ② 电源指示灯：当扩音器通电时，此灯会亮。绿灯表示高电压，红灯表示低电压，当此灯亮红灯时，请及时为电池充电。
- ③ AUX IN 输入插孔：用随机配送的ø3.5mm音频线将DVD、MP3等音乐信号导入本机可做有源音箱使用。
- ④ MIC IN 输入插孔：将ø3.5mm的麦克风插头插入此孔，进入扩音工作状态；操作时，请不要将麦克风的拾音面朝向扩音器的扬声器，以免产生啸叫。
- ⑤ 充电输入插孔：将随机配置的5V/600-750mA电源充电器插头插入此孔，即可开始对电池充电。
- ⑥ 充电指示灯：将充电器插入⑤孔内时，指示灯亮，表示电池进入充电状态；指示灯由红色变为绿色后，表示电已充满。

## 使用与注意事项

- 请按照电池仓内的标示正确装入电池。
- 将头戴麦克风正确的佩戴在头部，并调整好麦克风的拾音角度。
- 请根据实际使用空间适当调整音量大小，以获取良好使用效果。
- 长时间不使用时应将电池充满电，以保证电池的使用寿命。
- 请不要将外部音源信号（如DVD、MP3等）从MIC插孔输入，以免声音幅度过大而失真。



- 为了达到良好效果,请对准头戴的咪芯(1-2cm)处发音，以防方向不正引起啸叫。



- 扩音器应放置在室内干燥通风处，避免雨淋、进水、重摔。



- 非专业技术人员请不要擅自拆机改装或维修；如有问题或服务需求请联系当地经销商。

## 电池的使用和安全须知

1. E168扩音器由锂离子电池供电，电池有使用寿命限制,当工作时间明显缩短时,请更换电池。
2. 过高或过低的温度都会影响电池的充电效果,请将电池充电的环境温度保持在0-45℃。
3. 请不要擅自从扩音器内取出电池挪作其它用途,更不要将电池掷入火中或水中。
4. 电池属于易耗品，不在保修范围之内，更换电池时，请使用厂家电池。
5. 请注意不要使电池发生短路（避免与项链、钥匙、发夹、导线等金属物放置在一起），也不要使用其它充电器或已受损电池。
6. 请正确处理废弃电池，不要将其直接投入垃圾桶。
7. 不要让儿童接触电池，并将电池当做玩具。
8. 不要捶打、抛掷电池，避免猛烈撞击电池。

## 包装清单



Welcome to use TAKSTAR portable digital voice amplifier. This product is ideal for teaching, tour guide etc. because of the excellent digital technology, long battery playtime and high output power. Please read this user manual detailedly before using to make sure the correct operation.

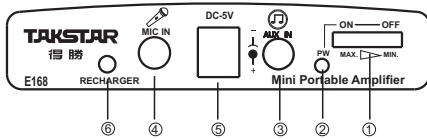
## Features

- Unique and fashionable design
- CLASS D digital module for low power consumption
- 6W output power
- Built-in high capacity rechargeable lithium-ion battery for upto 20hrs continuous playtime
- Built-in MCU intelligent charging management system for secure battery charging and discharging

## Specification

Frequency Response: 80Hz–12kHz  
 Output Power: 6W (PMPO:12W)  
 Output Impedance: 4Ω  
 Operating Voltage: 3.7V  
 Battery Specification: 3.7V/2200mAh lithium-ion battery  
 Power Adapter Specification: DC 5V/600–750mA  
 Recharging Time: 4-6hrs  
 Playtime: 20hrs

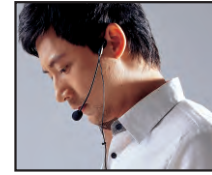
## Function Illustration



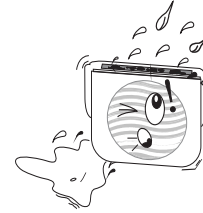
- ①. Power switch and volume adjusting knob: turn the knob to left, you will hear the sound "Di", it means it is on, the power indicator ② will light, turn left for loud voice, turn right for low voice until power off.
- ②. Power indicator: when the voice amplifier is on, the indicator lights. Green is normal, red is in low power condition, please recharge for the battery in time when it is red.
- ③. Audio input socket
- ④. Microphone input socket: insert the microphone ø3.5mm pulg into this socket. When speaking, avoid point the capsule to the speaker to avoid howling.
- ⑤. Power adapter input socket: input the plug of DC 5V/600–750mA power adapter into this socket for battery recharging.
- ⑥. Recharge indicator: when the power adapter plug is inserted in the power adapter input socket⑤, the indicator lights, it means it is being recharged; when it turns into green, it means the battery is full recharged.

## Operation & Caution

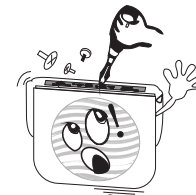
1. Put the battery into the battery compartment according to the polar.
2. Wear the headworn microphone correctly and adjust the suitable microphone pick-up angle.
3. Adjust the volume according to the actual space size.
4. When long time no use, fully recharge the battery to assure the battery life time, and then take out the battery.
5. Don't insert external audio signal such as DVD or MP3 into the MIC socket to avoid distortion due to extreme high voice.



Aim at the headworn mic capsule when speaking and keep the distance between vocal and mic as 1-2cm to avoid howling.



Keep the amplifier in a dry, ventilative place, avoid drench, sling.



Non-special technician is not allowed to disassemble or repair the product, please contact the local agent if there is any question or service requirement.

## Caution For Battery

1. E168 voice amplifier is powered by lithium-ion battery, the battery life time has limit, please change the battery when the playtime is obviously shorten.
2. Extreme high or low temperature will influence the battery recharge effect, please keep the environment temperature as 0-45°C for battery recharging.
3. Don't use the battery of this amplifier for other usage or throw it into fire or water.
4. Battery belongs to consumption part, it is not within the after-service range, please use the battery supplied by manufacturer when you want to change the battery.
5. Avoid making the battery short (don't put the battery with the metal part such as necklace, key, barrette, lead wire etc.), don't use other power adapter or damaged battery.
6. Please dispose the abandoned battery correctly, do not throw it into the trash can directly.
7. Keep the battery out of reach of Children.
8. Do not thump or sling the battery.

## Standard Configuration

